

HEROINAS DE SALVORA

**MAIN PARTICULARS**

Length over all	82.32 m.
Moulded breadth	18.00 m.
Depth main deck	8.00 m.
Scant. draught	6.20 m.
Design draught	6.20 m.
GT	7832T
Accommodation	40 p
Max speed	17.6 kn
Oil recovery	1800m ³
Bollard Pull	213t

Description

The vessel is a **213t seagoing tugboat** specialized in **maritime rescue and assistance**, equipped with the necessary means for the **rescue and salvage** of vessels and human lives, and additionally with the capacity to fight against **oil pollution, firefighting, humanitarian aid and patrolling**.

The hull was designed to handle the very worst of sea conditions and to allow crew and passengers to endure despite a harsh environment. The **Promas rudder system** with nozzle propellers enable **increased energy efficiency, propulsive efficiency, and manoeuvrability**. Besides, the four transverse tunnel ensure the station keeping in **DP-2** operation modes

The arrangement is designed with an **spacious and comfort accommodation area in the forward** half of the vessel and a **clear aft deck area** prepared for multipurpose operations, cargo, salvage or pollution response.

The **power generation and propulsion plant** is optimized for the vessel's operational profile, reaching up to **15 different operational modes**. A hybrid plant is arranged to move the two shaft lines through two gearboxes, each driven by a high power main diesel engine and medium power electric motor/generator. This configuration provides the vessel with great versatility and the possibility of **minimizing the fuel consumption and emissions in each different mission**.



HEROINAS DE SALVORA



Power Generation and Propulsion

Main propulsion:
Diesel engines: 2 x 4800 kW
PTI/PTO: 2 x 2500 kW
Auxiliary generators 3x 1980 kW
Emergency generator: 1 x 272 kW
Tunnel thruster: 4x961kW

Capacities

MGO 1150m³
Fresh water: 308 m³
ORO: 1875m³

Fire Fighting

EXTERNAL:

Fire Pump 2x4280m³/h
Fire Monitor (water/foam) 2x 2400/600m³/h

Class

BV + HULL MACH, Oil recovery Tug Fire-fighting 2 - water spraying SP42, COMF-NOISE 3 COMF-VIB 3, + AUT-UMS MON-SHAFT, CLEANSHIP + ALM, INWATERSURVEY, + DYNAPOS AM/AT R

Construction

Ship designer: Seaplace (Spain)
Shipyard: Zamakona Yards (Spain)
Year of built: April 2024
Class: Bureau Veritas
Shipowner: Salvamento Marítimo (Spain)

Flight capacities

Flight deck for drones
Hangar area 75m²

Deck Equipment

Main cranes: 2x20 t. @ 15 m.
One auxiliary crane: 1t@5m
Towing winch: MR-E/2x220/2/1500-78
Auxiliary winch: 2x MAX-C/45/300-16/1
Towing hook 1514 TN0200 (Ferri)
Pop up pins Ferri
Stern roller Ibercisa

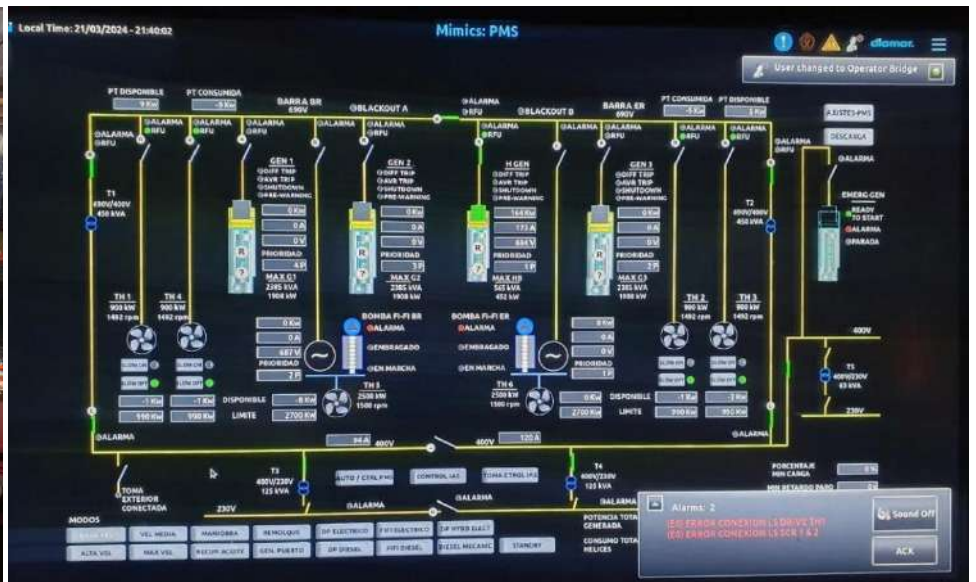
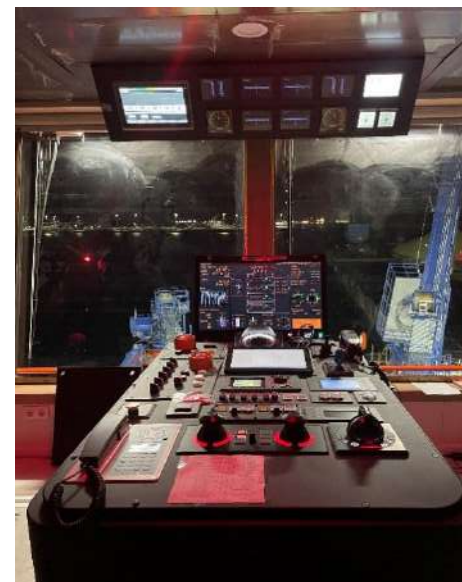
Oil Recovery Equipment

2x Sweeping arms
300m x2m Containment boom
Skimmer system
Tank cleaning and inertisation system

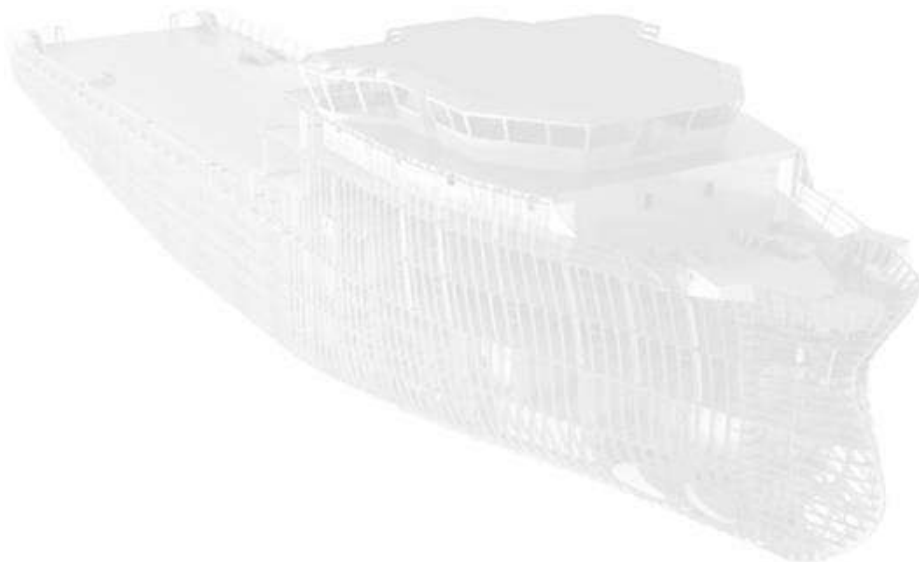
Accommodation

Single cabin: 22
Double cabin: 2
Cuadruple cabin: 4
Hospital
Survivors room









www.seaplace.es

www.seaplace.es
seaplace@seaplace.es
Madrid-Spain