

**Primer arrastrero-cerquero con propulsión diesel-eléctrica de imanes permanentes, sistema de baterías de alto rendimiento, equipo de pesca full-electric y alta capacidad de tanques**



## MAIN CHARACTERISTICS

Length overall:	87,65 m
Length between pp:	78,20 m
Beam, moulded:	19,00 m
Depth to Deck #1:	10,20 m
Crew:	13 persons

## TANK CAPACITIES

Cargo Fish Tanks:	3.700 m <sup>3</sup> (16 tanks)
MGO/Fuel Oil:	599/111 m <sup>3</sup>
Fresh Water:	140 m <sup>3</sup>
Ballast Water:	800 m <sup>3</sup>
Lube Oil:	25 m <sup>3</sup>

## FISHING EQUIPMENT

FISH PUMPS (2x) + WATER SEPARATOR (1x)

PURSE NET & SEINE EQUIPMENT (*electric*)

- Rollers for purse seine (1x)
- Davits for purse seine (2x)
- Purse seine winches (2x)
- End wire winch (combined mooring) (1x)
- Float winch (combined mooring) (1x)
- Breast winch (1x)
- Net hauler (1x)
- 1 x Net chute (1x)
- Ring needle (1x)

TRAWLING EQUIPMENT (*electric*)

- Trawl winches (2x)
- Net drums (2x)
- Tail end winches (2x)
- Fish hose reels (3x)
- Reels for cable for fish pump (3x)
- Net sounding winches (2x)
- Auxiliary winches (4x)
- Trawl gantry (1x)

## PROPULSION

DIESEL ELECTRIC

2x CP Propellers in Nozzle

2x Permanent Magnet Electric motors, 3400 kW

Side Thrusters: 1x CP 1400 kW fwd  
1x CP 700 kW aft

## GENERATING SETS

Main Generators: 3x 2110 kWe, 720 rpm  
2x 1300 kWe. 720 rpm

Battery for Energy Storage: 1x 1130 kWh Bank  
discharge rate 3C

## OTHERS

MOORING WINCHES (*electric*)

- Windlasses w/chain stoppers (2x)
- Mooring Winches (4x)
- Mooring/Net wire fwd (2x)

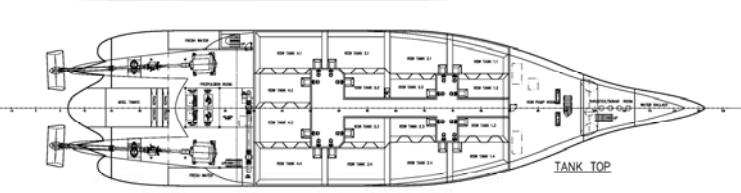
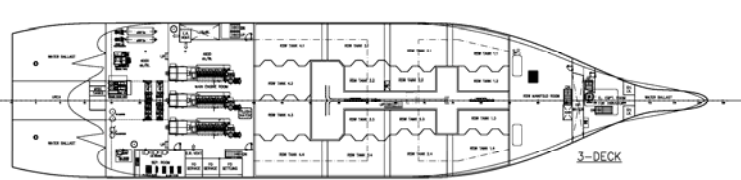
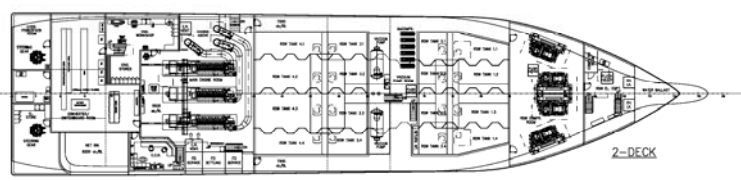
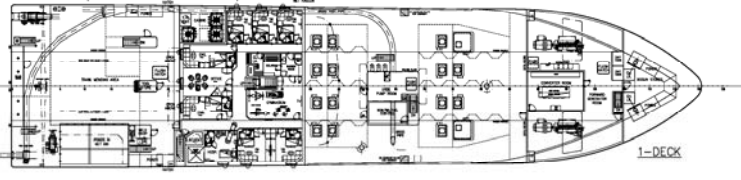
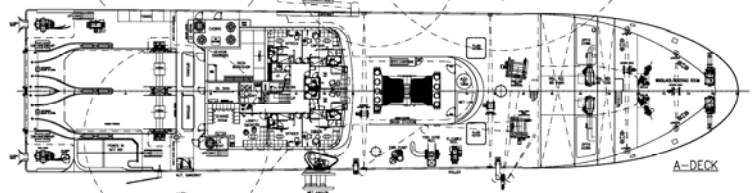
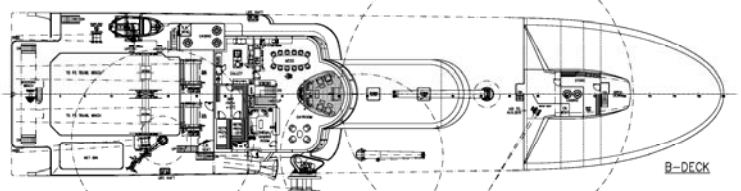
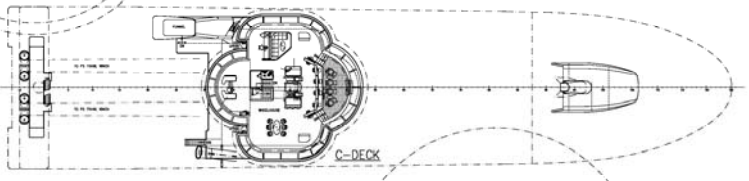
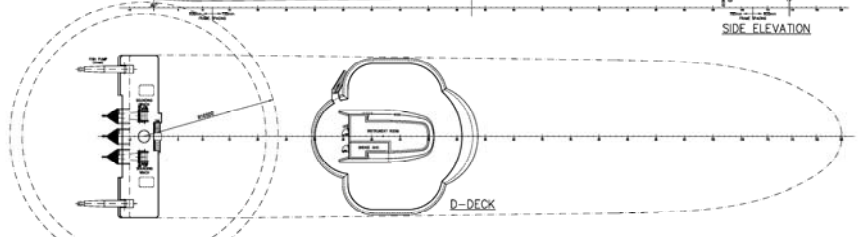
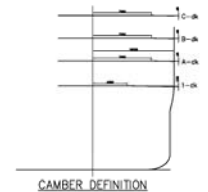
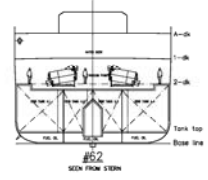
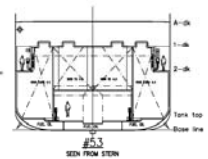
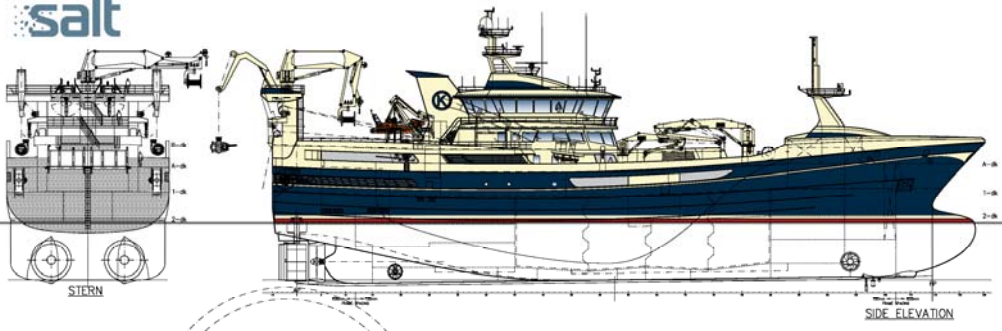
REFRIGERATION PLANT 4x RSW 1100 kW

CRANES 2x Knuckle Boom Cranes Forward  
2x Trawl Handling / Net stacker  
2x Fish Pump Cranes

## CLASSIFICATION

Class: BUREAU VERITAS

Notation: I ⌘ Hull ⌘ Mach, MON - SHAFT, Ice-  
Class ID, Fishing Vessel, AUT-UMS.



PRINCIPAL PARTICULARS:

LENGTH O.A. (ENCL.3)	87.65m
LENGTH BETWEEN PERP.	78.00m
BREADTH MLD.	19.00m
BREADTH MARK.	20.00m
DEPTH TO 1-DECK	10.20m
DEPTH TO 2-DECK	7.20m

NO. 0346	REV. 101-001	A
GITTE HENNING		
salt SHIP DESIGN		
GENERAL ARRANGEMENT		
DATE	SCALE	1:25



# ZAMAKONA YARDS



**NEWBUILDING**



**SHIP REPAIR & REFIT**



**OFFSHORE SERVICES**



**SUPPLIES**

## BASQUE COUNTRY

ZAMAKONA YARDS BILBAO  
Puerto pesquero s/n  
48980 Santurce. Bilbao - SPAIN  
Phone: +34 944 618 200 / +34 944 937 030  
Fax: +34 944 612 580  
E-mail: zamakona@zamakona.com

ZAMAKONA YARDS PASAIA  
Bordalaborda, s/n.  
20110 Pasaia. Gipuzkoa SPAIN  
Phone: +34 943 344 100  
Fax: +34 943 515 296  
E-mail: pasaia@pasaia.com

## CANARY ISLANDS

ZAMAKONA REPNAVAL  
CIA. Trasatlántica Española, s/n.  
Dársena Exterior. Puerto de Las Palmas.  
35008 Las Palmas de Gran Canaria  
Phone: +34 928 467 521  
Fax: +34 928 461 233  
E-mail: info@zamakonayards.com

## BUILDING THE FUTURE

Bilbao Pasaia

Canary Islands



[www.zamakonayards.com](http://www.zamakonayards.com)